

CODI

CRAFT CANNING SYSTEM



**CCL- 45 COUNTER PRESSURE FILLER
& SH- 45 SINGLE HEAD SEAMER
CRAFT CANNING SYSTEM**

**UP TO 50 CANS PER MINUTE
UP TO 9.8 BARRELS PER HOUR**

**ENGINEERED SYSTEM
SANITARY CONSTRUCTION
COMPACT FOOTPRINT**

CODI

QUALITY DESIGN

CCL- 45 | COUNTER PRESSURE FILLER

QUALITY OF MACHINE

Production Rate (12oz / 355mL)

- Up to 50 cans per minute
- Up to 137 cases per hour
- Up to 9.82 barrels per hour
- Up to 10.65 hectoliters per hour
- Up to 281 gallons per hour

Construction

- Stainless Steel Construction
 - 304 Stainless Steel on contact surfaces
- 3A Rated Components
- Tri-Clover Fittings at all Connections

Functionality

- Five Head Counter Pressure Filler
 - Optional Upgrade to Volumetric Filler with Purchase of Magmeter Flow Meters
- Filling Valves with 304 Stainless Steel Fill Heads
- Closed CIP "Clean In Place" System
 - Increased Contact Time
- Low Foam Filling Process at:
 - Higher Temperatures
 - Higher Carbonation Levels
- Widget Can Ready
 - Pre-purges and fill level are controlled per the filling requirements set by the can maker.
- Integrated Product Pump
- Simple and Easy Maintenance
- Worldwide Customer Service
- Spare Parts Service

Compressed Air Requirements

10 cfm @ 110 psi

Power Requirements

Filler and Seamer Only

230 V / 3 Ph, 60 Hz, 25 Amps

Product Sizes

Standard Beverage Can, 202/211

12oz, 16oz, 19.2oz, 375mL, 500mL

Sleek Can, 202/204

7.5oz, 12oz

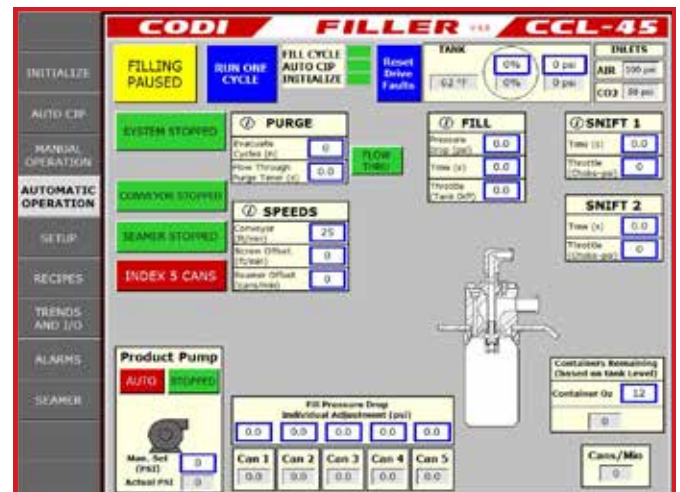
Slim Can, 200/202

187mL, 250mL



PLC Controlled Counter Pressure Filling Technology

- 13" Touchscreen HMI
 - Task Oriented Display
 - Control of all variables of the filling process
- Regulate and Change Purge Cycles on the fly
 - Important for Widget Cans
- Control Tank Pressure and Pump Rate
 - Based on Solubility of Beer
- Control Fill Rate and Control F.O.B.
 - Complete control of beverage transfer into can
 - Settle Time
 - Sniff Cycle
- Canning System and Conveyance easily integrate together
 - Reduce Shipping Costs



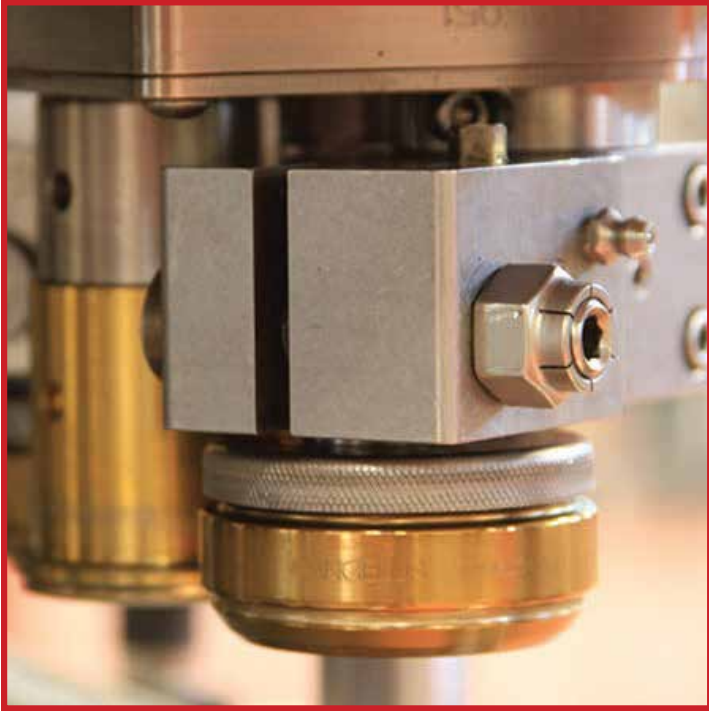
CODI

Controlled Filling

A quality product deserves a quality fill. The Codi CCL-45 Counter Pressure Filler achieves this by letting the user set and adjust every step of the fill cycle through the HMI.

Fill with Higher Volumes of Carbonation

Counter Pressure technology allows for canning of higher carbonation and temperatures, compared to open air filling technology. Achieved by the ability to raise and lower bowl pressure accordingly.



SH- 45 | Single Head Seamer

- Patent Pending Container Positive Positioning Design that increases throughput
 - Cans are timed with feed screw to complete every step of the seaming process exactly the same for every can.
- Critical Seaming Operations engaged mechanically NOT pneumatically
 - Lifting of can onto chuck with cam vs. vertical pneumatic
 - Seaming Operations 1 & 2
- Single Point Quick Height Adjustment for Multiple Can Heights
- "S" Style Seaming Rolls with Tapered Ceramic Bearings
- VFD Speed Control
- Easily set Rolls and Spring Force through Outward Facing Adjustment
- Easy Access Grease Lubrication Points
- Lid Dropper with Mechanical Cutter and Integrated PLC Controlled Under Lid Gassing
- Missing End Can Stop – Prevents Cans from pushing up onto the Chuck



Widget Cans - Are You Purging Widgets Correctly?

With the ability to program multiple pre-evacuation cycles, fill level control, and positive position seaming, our machine is the only one in its class that can adequately purge the widget in a Ball/Ardagh Widget Can prior to filling, and fills to the correct level with positive positioning seaming for can consistency.



CODI

QUALITY CLEANABILITY

Fully Closed Clean In Place (CIP) System

A hygienic machine design that is built with 304 Stainless Steel, 3-A Compliant Components, and Stainless Steel Tri-Clover Fittings. The ability to run caustics throughout all tanks and lines on the filler along with 180°F water is what sets a Codi Counter Pressure Filler apart from others.

Clean and sanitize machine with Integrated Auto CIP Function:

- 45 minute CIP cycle
- 180°F Heat Rating for a Complete Caustic Clean
- Recirculate and Reclaim Chemicals
- Flowrate: 3-5 ft/sec

QUALITY CANNING

Minimal Dissolved Oxygen - (25-50 ppB Shaken)

The Counter Pressure Fill Process greatly reduces the potential for oxygen pickup. This is done by ensuring that all oxygen is fully purged out of the can through adjustable purge and snift cycles during filling. Once filled, Dissolved Oxygen (D.O.) is kept down with a bubble breaker and under lid gassing before the can is seamed.

Control Foam On Beer (FOB) & Product Slosh

By controlling the snift and what pressure the seal is broken from the can prior to seaming, the level of FOB can be increased or decreased to help reduce D.O.

D.O. Numbers in Can - Two Minutes Shaken

Nitrogen Gas: 23 Total TPO in can

Tank Test: 15 Parts Per Billion Pick-up

QUICK ADJUSTMENT FOR MULTIPLE CAN SIZES



STEAMING IS CLEANING!



MAXIMIZE PRODUCTION



304 STAINLESS STEEL CONSTRUCTION

